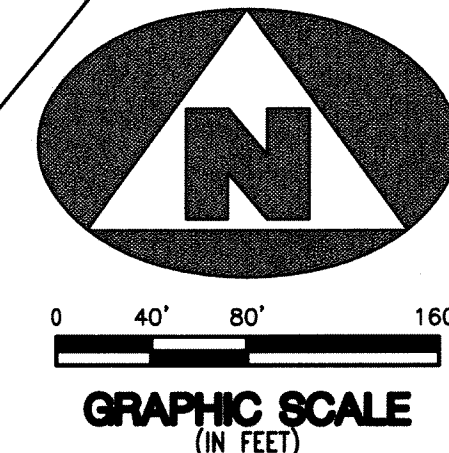
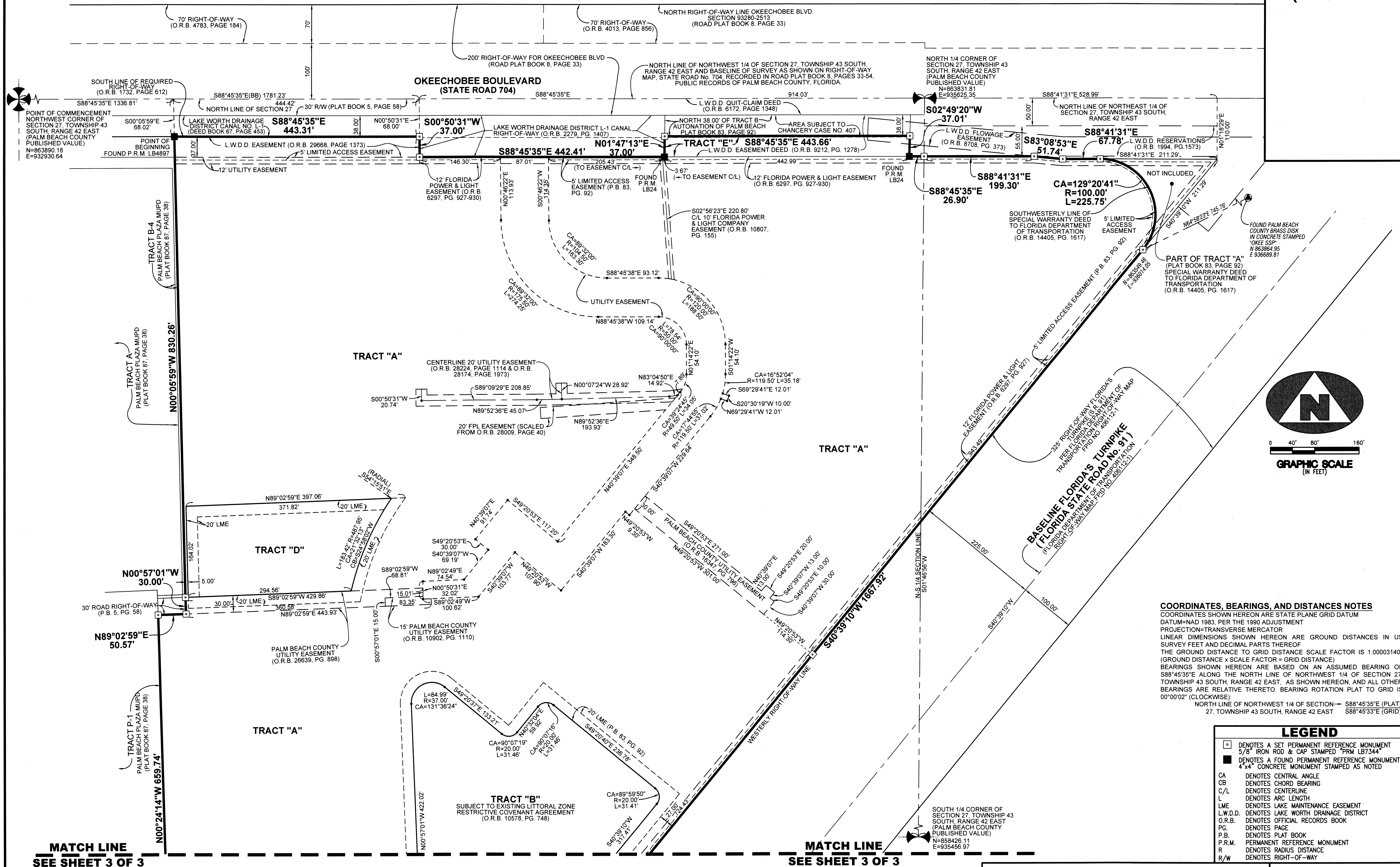


ARRIGO M.U.P.D.

168

BEING A REPLAT OF A PORTION OF THE PLATS OF PALM BEACH FARMS COMPANY PLAT NO. 3, PALM BEACH FARMS COMPANY PLAT NO. 9, AND AUTONATION OF PALM BEACH, ACCORDING TO THE PLATS THEREOF, AS RECORDED IN PLAT BOOK 2, PAGE 45, PLAT BOOK 5, PAGE 58, AND PLAT BOOK 83, PAGE 92, RESPECTIVELY, PUBLIC RECORDS, PALM BEACH COUNTY, FLORIDA, AND LYING IN SECTION 27, TOWNSHIP 43 SOUTH, RANGE 42 EAST, PALM BEACH COUNTY, FLORIDA.



COORDINATES, BEARINGS, AND DISTANCES NOTES
COORDINATES SHOWN HEREON ARE STATE PLANE GRID DATUM
TUM-NAAD 1983, PER THE 1990 ADJUSTMENT
PROJECTION-TRANSVERSE MERCATOR
LINEAR DIMENSIONS SHOWN HEREON ARE GROUND DISTANCES IN US SURVEY FEET AND DECIMAL PARTS THEREOF
THE GROUND DISTANCE TO GRID DISTANCE SCALE FACTOR IS 1.000031401 (GROUND DISTANCE x SCALE FACTOR = GRID DISTANCE)
BEARINGS SHOWN HEREON ARE BASED ON AN ASSUMED BEARING OF S88°45'35"E ALONG THE NORTH LINE OF NORTHWEST 1/4 OF SECTION 27, TOWNSHIP 43 SOUTH, RANGE 42 EAST, AS SHOWN HEREON, AND ALL OTHER BEARINGS ARE RELATIVE THERETO. BEARING ROTATION PLAT TO GRID IS 00°00'02" (CLOCKWISE)
NORTH LINE OF NORTHWEST 1/4 OF SECTION 27, TOWNSHIP 43 SOUTH, RANGE 42 EAST S88°45'35"E (PLAT)
27, TOWNSHIP 43 SOUTH, RANGE 42 EAST S88°45'33"E (GRID)

LEGEND table with symbols for monuments, bearings, easements, etc.

MATCH LINE SEE SHEET 3 OF 3

MATCH LINE SEE SHEET 3 OF 3

ASSOCIATED LAND SURVEYORS, INC. 4152 W. BLUE HERON BLVD. SUITE 121 RIVIERA BEACH, FLORIDA 33404
ARRIGO M.U.P.D. SCALE: 1"=80' WO.NO.: 04-0018 DWN: BLS SHEET 2 OF 3